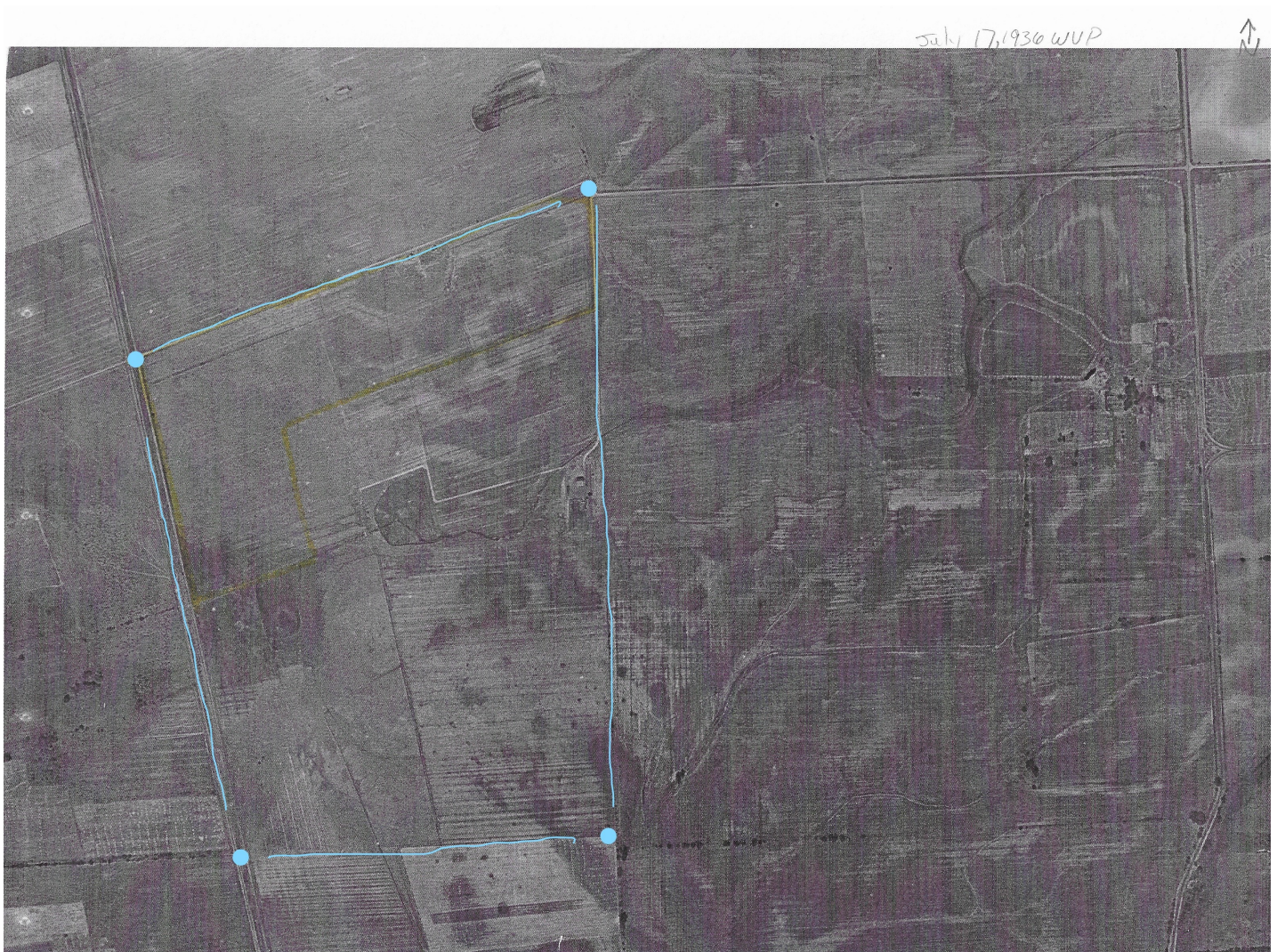


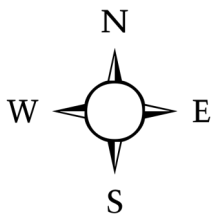
One of the most incredible achievements on the farm was the construction of ponds during the period from 1935-1955. Using aerial photography, one can visualize the transformation that took place.



July 17, 1936

Since we do not know the exact size of the farm, based on agricultural endeavors observed on the map, the outline of the farm is noted in blue. However, these lines may not be accurate but it gives a sense of where the farm is located on the aerial photos.

One can see the beginning of the road to build the ponds. Note the creek on the property and on the adjoining property to the east. The irrigation ditch has not been constructed. One can also see the pond development on the West side of the farm. Today, this is a separate property now known as Duck Flat Flyway.

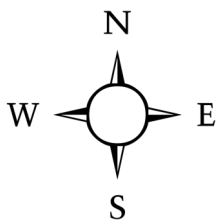






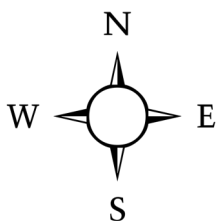
July 18, 1944

Again, not knowing the exact perimeter of the farm, the blue outline encircles what the farming practices note. Ponds are in construction. The irrigation ditch has not been installed, but the creek is being channeled on the east side. A large pond is being built on the north side. There is active construction at Duck Flat Flyway to the West.





June 28, 1948



June 28, 1948

It appears that the irrigation canal is being installed and the large pond on the north has been altered from rectangular to a triangle shape. There are efforts to construct a new pond south of the house. Extensive activity continues to occur at Duck Flat Flyway.



Aug 28, 1955



August 28, 1955

The ponds have been completed, as has the irrigation ditch which is now a channel across the farm. Another pond is under construction south of the house. The pond at Duck Flat Flyway to the west is completed. A new pond is under construction north of the irrigation ditch. It may be likely that the north pond is on a separate property,

